



Kingfisher House

Battersea Reach | Juniper Drive | London | SW18 1TX

£3,000 Per month

MASON
& VALE
PROPERTY

Kingfisher House

Battersea Reach | Juniper Drive

London | SW18 1TX

£3,000 Per month

A modern, well presented wing style apartment in the Battersea Reach riverside development.

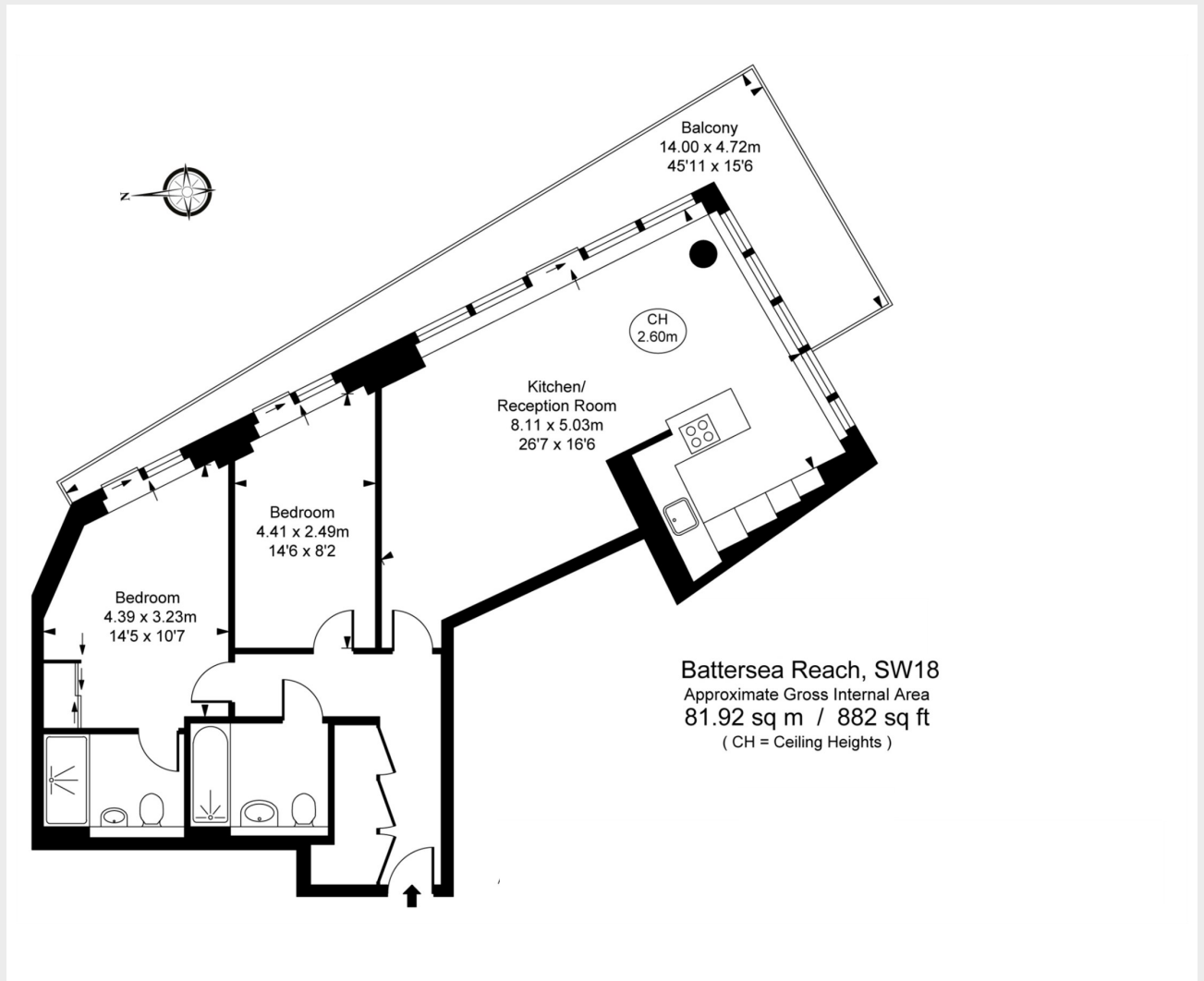
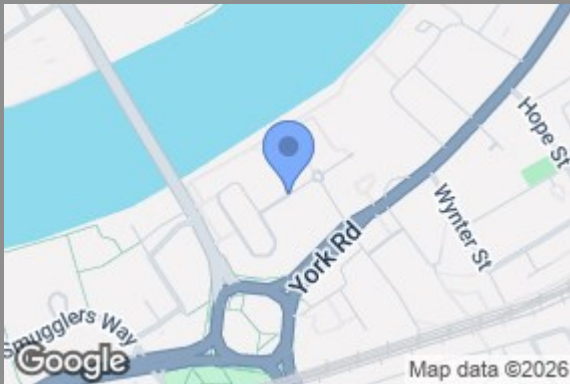
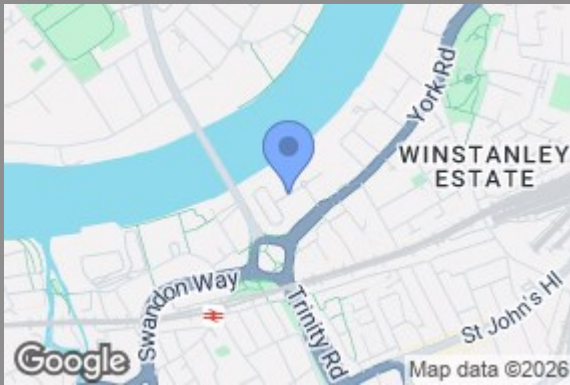
Offered on an unfurnished basis with secure underground parking for one car.

- Wing Style two bedroom apartment
- Secure underground parking
- Riverside location
- 24 hour concierge
- Communal landscaped gardens
- Great Transport links



This modern two bedroom, two bathroom apartment benefits from having a lovely wrap around terrace with views across the communal gardens to the river Thames. Both bedrooms are a good size, with the master benefiting from built-in wardrobes and an ensuite. There is a useful utility cupboard in the hallway housing the washer/dryer plus storage space.





Council Tax Band F EPC Rating C

Energy Efficiency Rating		Current	Potential
Very energy efficient - lower running costs			
(12 plus) A			
(91-91) B			
(69-80) C		73	
(55-68) D			
(39-54) E			
(11-38) F			
(1-10) G			
Not energy efficient - higher running costs			
England & Wales		EU Directive 2002/91/EC	

Unit 8c, Commodore House Juniper Drive
 Wandsworth
 SW18 1TW
 02078560313
 hello@masonandvale.co.uk
 masonandvale.co.uk